



DTB-148

denver.eu

March/2024



FR

Cet appareil,  
ses accessoires  
et ses batteries  
sont recyclables

À DÉPOSER  
EN MAGASIN



À DÉPOSER  
EN DÉCHÈTERIE



Points de collecte sur [www.quefairedesdechets.fr](http://www.quefairedesdechets.fr)  
Privilégiez la réparation ou le don de votre appareil !

## Safety information

Please read the safety instructions carefully before using the product for the first time and keep the instructions for future reference.

1. This product is not a toy. Keep it out of reach of children.
2. Warning: This product includes AAA batteries. Only use AAA batteries on remote control.
3. Keep product and batteries out of the reach of children and pets to avoid chewing and swallowing.
4. Never use old and new batteries or different types of batteries together. Remove the batteries when you are not using the system for a longer period of time. Check the polarity (+/-) of the batteries when inserting them in the product. Wrong positioning can cause an explosion.
5. Product operating and storage temperature is from 0 degree Celsius to 40 degree Celsius. Under and over this temperature might affect the function.
6. Only use the original adaptor which are supplied with the model.
7. Never open the product: the device may contain parts with deadly voltage
8. Repairs or service should only be performed by qualified personnel
9. Please notice that the standby button on the remote control only put the unit in standby.
10. The direct plug-in adapter is used as disconnect device, the disconnect device shall remain readily operable. So make sure there is space around the power outlet for easy access.
11. Do not expose to heat, water, moisture, direct sunlight!
12. This lightning flash with arrowhead symbol within an equilateral triangle is intended to alert the user to the presence of non-insulated "dangerous voltage" within the product's enclosure that may be of sufficient magnitude to constitute a risk of electric shock. To reduce the risk of electric shock, do not remove cover (or back) as there are no user-serviceable parts inside. Refer servicing to qualified personnel.

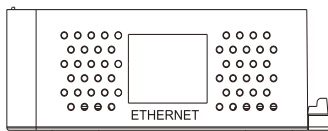
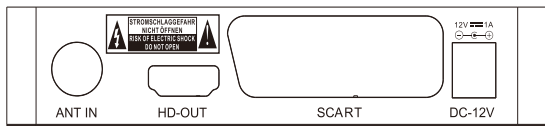
# 1. Control Elements

## Front Panel



USB USB Port

## Rear Panel



ANT IN

HD OUT

SCART

DC -12V for Power Adapter

ETHERNET

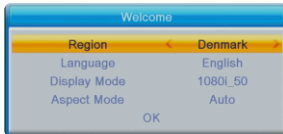
## 2.Remote Control



### 3. Basic Functions

#### 3.1 First Installation

First installation shall setup some important configures. It contains several options shown as figures below:



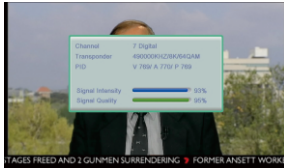
User can select Region, Language, Display Mode, Aspect Mode from this menu, when it is complete, user can use "OK" to search channels as shown in the figure below:



#### 3.2 Display Information Of Programs

Press key "INFO" to show the information of current programs when it is in normal playing state.

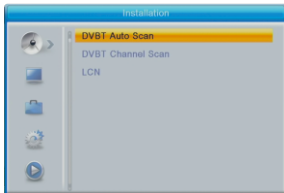




#### 4. Installation

There are two kinds of installation mode as follow:

- 1 DVBT channel Scan
- 2 DVBT Auto Scan



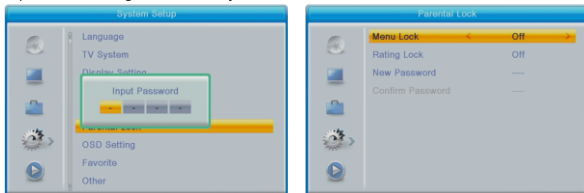
You can press “Right ”button to enter into this menu, then press “up/down/ right/left” to choose and change below functions:

- DVBT channel Scan
- DVBT Auto Scan
- LCN ~ to be on or off

## 5.Tool

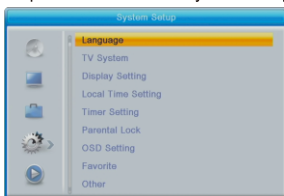
### Parental Lock

1. The input default password is "0000". Master code "3327"
2. If "menu lock" on, You can lock the menu of channel edit and searching.
3. If parental rating choose "18 years", that can lock the adult channels.



## 6.System Setup

System setup menu can provide convenient system setup, as shown below:



Press "Right" button to enter this menu and press up/down to choose and do the edit as you want.

Language

TV System

Display Setting

Local Time Setting

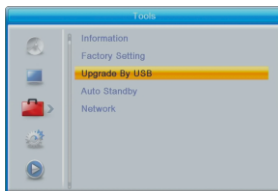
Timer Setting

Parental Lock

OSD Setting

## 7. Software Update

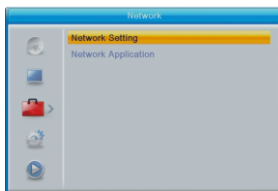
### Upgrade by USB



Please make sure don't shut down the power in the upgrade process;  
When upgrade finish, system will automatic restart with the new firmware

## 8. Network

When you enter to "Network" menu, you will see a screen as below:



1. Network Setting is select the network type and basic setting
2. Network Application is tools used to connect to the network, such as weather.



Please notice - All products are subject to change without any notice. We take reservations for errors and omissions in the manual.

ALL RIGHTS RESERVED, COPYRIGHT DENVER A/S



Electric and electronic equipment and included batteries contains materials, components and substances that can be hazardous to your health and the environment, if the waste material (discarded electric and electronic equipment and batteries) is not handled correctly.

Electric and electronic equipment and batteries is marked with the crossed out trash can symbol, seen below. This symbol signifies that electric and electronic equipment and batteries should not be disposed of with other household waste, but should be disposed of separately.

As the end user it is important that you submit your used batteries to the appropriate and designated facility. In this manner you make sure that the batteries are recycled in accordance with legislature and will not harm the environment.

All cities have established collection points, where electric and electronic equipment and batteries can either be submitted free of charge at recycling stations and other collection sites, or be collected from the households. Additional information is available at the technical department of your city.

Hereby, DENVER A / S hereby declares that the DTB-148 radio equipment complies with Directive 2014/53 / EU. The full text of the EU Declaration of Conformity is available at the following Internet address:

Please enter "www.denver.eu". Then click on the search SYMBOL in the top bar of the website and enter here the model number "DTB-148". You will now reach the product page. The Radio Equipment Directive (Directive 2014/53 / EU) can be found at "downloads / other downloads".

Operating Frequency Range: 177.5~858 MHz  
Max Output Power: 10W

DENVER A/S  
Omega 5A, Soeften  
DK-8382 Hinnerup  
Denmark  
[www.facebook.com/denver.eu](http://www.facebook.com/denver.eu)

#### AC/DC ADAPTER

Manufacturer's name or trade mark, commercial registration number and address	Manufacturer's name: Heyuan Mao Two Power Co., Ltd Trade mark: MOERPS Commercial registration number: 91441602MA52BB18XT Address: 3 Floor, Unit B, Plant 6, Xifa C Area, Silver Tin Industrial Zone, Xixiang Street, Bao'an District, Shenzhen City, China
Model identifier	MR-1201000EU
Input voltage	100-240 Vac
Input AC frequency	50/60 Hz
Output voltage	12.0 Vdc
Output current	1.0 A
Output power	12.0W
Average active efficiency	85.71%
Efficiency at low load (10%)	77.78%
No-load power consumption	0.041

# Contact

## Nordics

### Headquarter

Denver A/S  
Omega 5A, Soeften  
DK-8382 Hinnerup  
Denmark

Phone: **+45 86 22 61 00**  
(Push "1" for support)

E-Mail  
For technical questions, please write to:  
**support.hq@denver.eu**

For all other questions please write to:  
**contact.hq@denver.eu**

---

## Benelux

### DENVER BENELUX B.V.

Barwoutswaarder 13C+D  
3449 HE Woerden  
The Netherlands

Phone: **0900-3437623**

E-Mail: **support.nl@denver.eu**

---

## Spain/Portugal

### DENVER SPAIN S.A

Ronda Augustes y Louis Lumiere, n° 23 – nave 16  
Parque Tecnológico  
46980 PATERNA  
Valencia (Spain)

### Spain

Phone: +34 960 046 883  
Mail: **support.es@denver.eu**

### Portugal:

Phone: **+35 1255 240 294**  
E-Mail: **denver.service@satfiel.com**

## Germany

### Denver Germany GmbH Service

Max-Emanuel-Str. 4  
94036 Passau

Phone: **+49 851 379 369 40**

E-Mail  
**support.de@denver.eu**

### Fairfixx GmbH

Repair and service  
Rudolf-Diesel-Str. 3 TOR 2  
53859 Niederkassel

(for TV, E-Mobility/Hoverboards/Balanceboards,  
Smartphones & Tablets)

Tel.: **+49 851 379 369 69**

E-Mail: **denver@fairfixx.de**

---

## Austria

### Lurf Premium Service GmbH

Deutschstrasse 1  
1230 Wien

Phone: **+43 1 904 3085**

E-Mail: **denver@lurfservice.at**

---

If your country is not listed above,  
please write an email to  
**support@denver.eu**



DENVER A/S  
Omega 5A, Soeften  
DK-8382 Hinnerup  
Denmark

denver.eu  
facebook.com/denver.eu

Version 1.1

