



Instruction Manual

VPL-120

www.denver.eu

12/2025



FR
Cet appareil
est recyclable

À DÉPOSER
EN MAGASIN



OU

À DÉPOSER
EN DÉCHÈTERIE



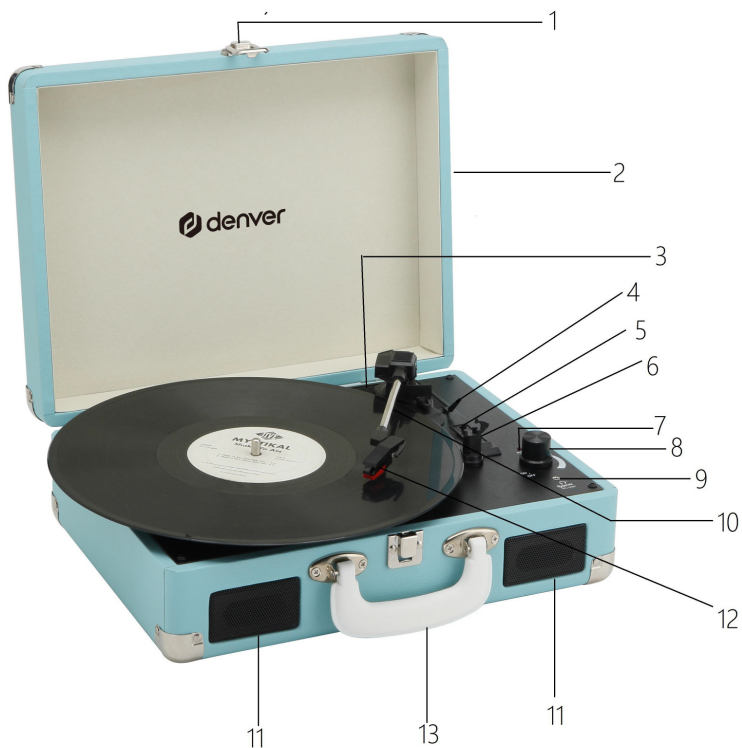
Points de collecte sur www.quefairedesdechets.fr
Privilégiez la réparation ou le don de votre appareil !

SAFETY INFORMATION

Please read the safety instructions carefully before using the product for the first time and keep the instructions for future reference.

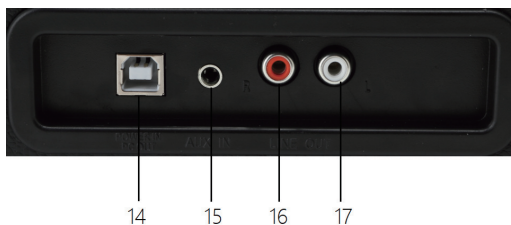
1. This product is not a toy. Keep it out of reach of children.
2. Keep product out of the reach of children and pets to avoid chewing and swallowing.
3. Product operating and storage temperature is from 0 degree Celsius to 40 degree Celsius. Under and over this temperature might affect the function.
4. Never open the product. Touching the inside electrics can cause electric shock. Repairs or service should only be performed by qualified personnel.
5. Do not expose to heat, water, moisture, direct sunlight!
6. Please protect your ears against loud volume. Loud volume can damage your ears and risk in hearing loss.
7. The unit is not waterproof. If water or foreign objects enter the unit, it may result in fire or electric shock. If water or a foreign object enters the unit, stop use immediately.
8. Only use with supplied Adaptor. The direct plug-in adapter is used as disconnect device, the disconnect device shall remain readily operable. So, make sure there is space around the power outlet for easy access.
9. Do not use non original accessories together with the product as this can make the product functionality abnormal.

DESCRIPTION



1. Lock
2. Dust cover
3. Adapter-Use this when playing 45rpm records with cut out centres.
4. Tone arm lift
5. Auto stop control
6. Speed selection-Three speed for choice:33 1/3,45,78rpm.
7. LED power indicator
8. Power switch/Volume control
9. Headphone jack
10. Tone arm
11. Speaker
12. Cartridge
13. Carrying handle

14. Power in/PC out Port
15. Aux in
16. Line out R channel
17. Line out L channel



- **Red plug into R/H channel input.**
- **White plug into L/H channel input.**

INITIAL SET-UP

MAINS CONNECTION

Ensure that the mains voltage of your home corresponds to the operating voltage of the unit. Your unit is ready to be connected to a mains voltage of 5V DC adaptor.

AMPLIFIER CONNECTION(if required)

Whilst you can listen to your new turntable using the built in speakers you may wish to connect it to your existing Hi Fi system. Connect the audio plugs to the Line in put on your mixer or amplifier using an RCA cable(not supplied)

Playing a record

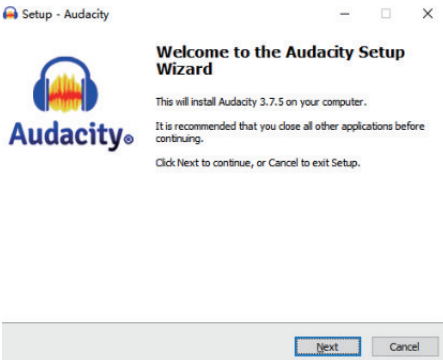
- Place the record of your choice on the turntable. If required, do not forget to place the adaptor on the record spindle.
- Choose the desired playing speed using the speed selection switch between 33 1/3, 45 and 78rpm.
- Turn on the Rotary Power Switch, note that this also controls volume.
- Release the tone arm lock.
- Raise the arm with your hand lightly.
- Place the stylus vertically over the first track of the record, the turntable will start turning automatically.
- Put down the stylus slowly on to the record to play.
- When a record comes to the end, the turntable will stop automatically if the auto-stop switch is in the ON position. If the switch is in the off position then it will keep revolving until the tone arm is returned to the tone arm rest.
- Lift up the tone arm and put it on the rest when finished.
- Replace the protective cap on the stylus and close the tone arm lock.
- Turn off power at mains.

INSTALLING THE SOFTWARE

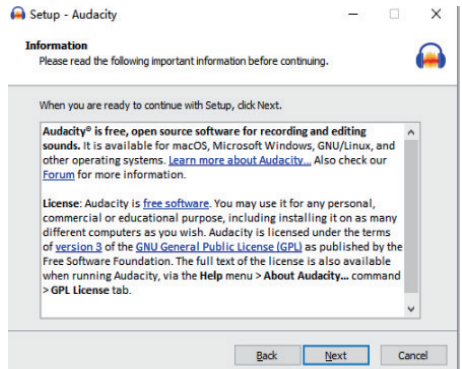
Visit www.audacityteam.org to download Audacity software, Please download without Muse hub and follow the instructions and the software will automatically install as follows:



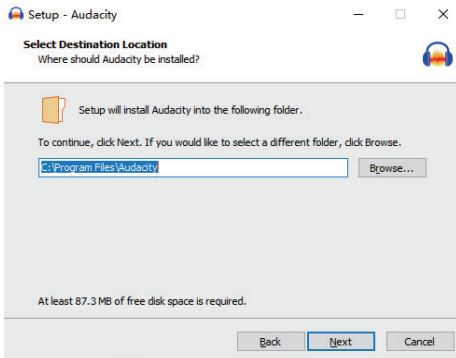
- Click'Next'



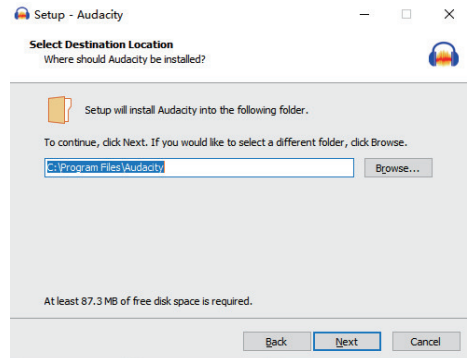
- Select'I accept'option then click'Next':



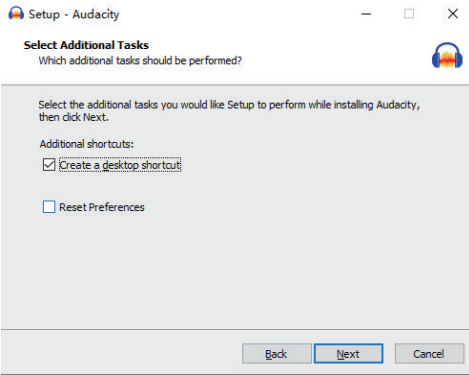
- Click'Next':



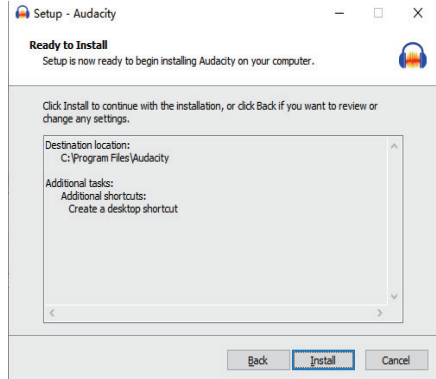
- Here either select another location or click'Next'to continue(recommended):



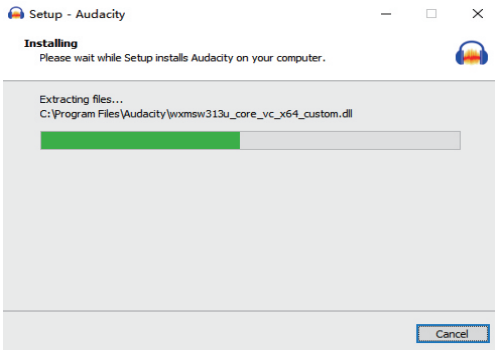
- Click 'Next' to continue:



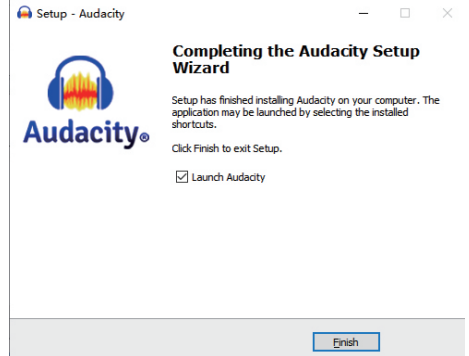
- Click 'Install' to continue:



- The software will start to install:



- Click on 'Finish' to complete the installation:

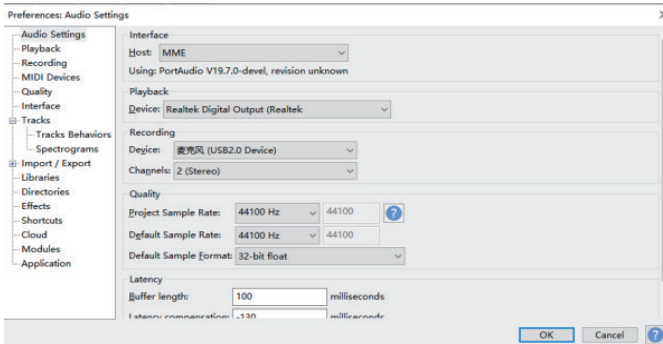


- Audacity should automatically start up, if not follow the next sequence:
- The Audacity icon will now be seen on the desktop, double click on it to start

Audacity running, if an icon does not appear, go to the 'C' drive under 'My Computer', click on 'Program files' and then 'Audacity'. Right click on the 'brange ball wearing Headphones' icon and select 'Send to' then 'Desktop (create shortcut)'.


Using Audacity

- Plug the USB cable into the back of the unit and the other end into a USB port on your computer.
- Run the Audacity software by double clicking the Audacity icon.
- Before recording,click on Edit at the top of the main page;select Preferences at the bottom of the menu which will open Preferences.
- At the recording part of the window open the Device menu by using the down arrow on the right hand side. Select the USB 2.0 Device option from the menu. Also tick the box next to Software Play through (Play new track while recoding it).
- The lower box enables the number of recording channels to be set, 1 is Mono and 2 is Stereo, select the Stereo option.
- Click OK once the options have been selected:

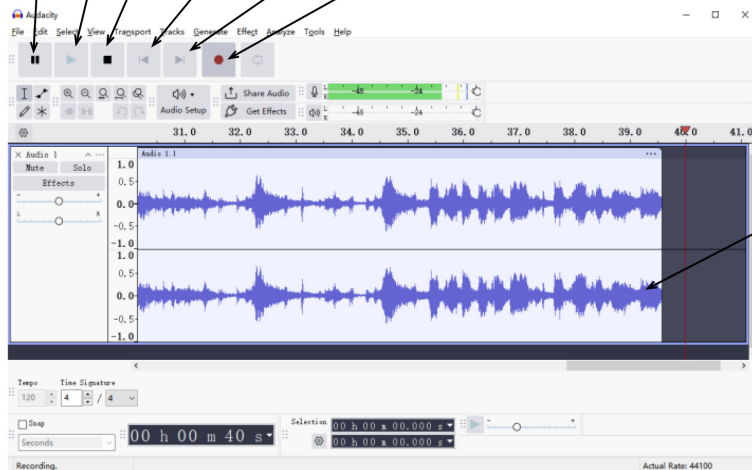


Preferences window

Recording to computer using Audacity

- Start the record playing as described above, and press Record  at the top of the Audacity window to start recording to the computer.
- Once recorded use the Transport controls at the top of the screen to, Go to start, Play, Record, Pause, Stop and Go to end of Wave form as below:

Pause Play Stop Go to Start Go to End Record



Waveform

- Use the file, Edit, View, Project, Generate, Effect and Analyse menus to Save, Export and Manipulate your music.
- NOTE: the blue wave form should sit in the Audacity window such that the peaks of it stop short of the top and bottom
- Before editing your music, the recorded waveform will need to be highlighted.
- To highlight your wave form, click with the left mouse button on the left hand side of the waveform (under the L+R controls) and the waveform will go darker.
- At this point the whole waveform can be edited. However if only a section of the waveform needs to be edited (or saved) the section required can be highlighted by placing the mouse over the beginning of the section hold the left button down and drag it over the area required and releasing it when the end of the desired section is reached. This darkened section will now be the only audio that will be edited.
- Alternatively click on the EDIT menu at the top left and then click on SELECT then choose from: All (whole wave form), Start to Cursor or Cursor to end.
- NOTE: after recording to the Computer, the USB cable may have to be removed from the USB port in order to enable playback later from the Computer.

Exporting your music files (.WAV)

- Once you have recorded and edited your music, you will need to save your files to the computer. To do this, click on file and move down to Export as WAV tab.
- Click on this and you will promptly be asked for the file name of the music recorded which will be saved in the location shown. At this point either make a note of the folder where your music is saved or save it in a folder of your choice.
- This can either be an existing one or a new folder.

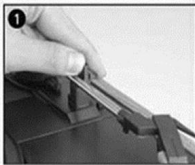
Exporting your music files (.Mp3)

- Once you have recorded and edited your music, you will need to save your files to the computer. To do this click on file and move down to Export as Mp3 tab.
- Click on this and you will promptly be asked for the file name of the music recorded which will be saved in the location shown. At this point either make a note of the folder where your music is saved or save it in a folder of your choice.
- This can be either an existing one or a new folder.

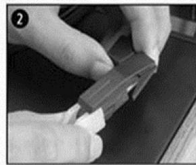
MAINTENANCE

REPLACING THE STYLUS

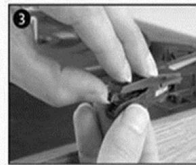
-Refer to the figures 1-8



push the arm lock to release the tone-arm.



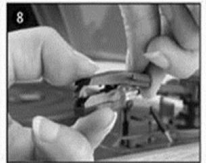
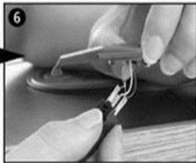
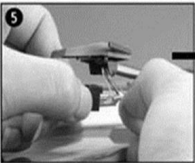
take off cap of the cartridge to expose the needle out.



separate the cartridge from the socket lightly.



take off the audio-line from the cartridges completely.

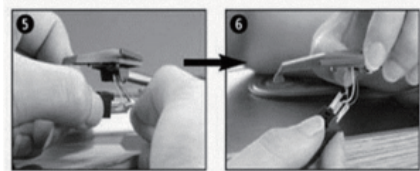


Insert the new stylus, insert the audio-line accordingly, and install the cartridge to the socket lightly.

NOTE: Please exercise extreme care whilst performing this operation so as to avoid the tone arm and audio line wires from any damage.

INSTALLING A NEW STYLUS CARTRIDGE

- Refer to the figures 5 & 6



NOTES

We advise you to clean your records with an anti-static cloth to gain maximum enjoyment from them and to make them last.

We would also point out that for the same reason your stylus should be replaced periodically (approximately every 250 hours)

Dust the stylus from time to time using a very soft brush dipped in alcohol (brushing from back to front of the cartridge)

WHEN TRANSPORTING YOUR RECORD PLAYER DO NOT FORGET TO:

- Replace the protective cap on the stylus.
- Lock the tone arm with the brace.

Please notice - All products are subject to change without any notice. We take reservations for errors and omissions in the manual.

| | |
|---|--|
| Manufacturer's name or trade mark, commercial registration number and address | Shenzhen Shi GuangkaiyuanTechnology Ltd. 91440300053998927W 2floor,41 Tian sheng Road,Tianliao Village, Gongming Street , Guangming , Shezhen, Guang dong,P.R.C. |
| Model identifier | GKYP50100050EU |
| Input voltage | 100-240V |
| Input AC frequency | 50/60Hz |
| Output voltage | 5.0V |
| Output current | 1.0A |
| Output power | 5.0W |
| Average active efficiency | 74.66% |
| Efficiency at lowload(10%) | 69.32% |
| No-load power consumption | 0.06W |

Please notice - All products are subject to change without any notice. We take reservations for errors and omissions in the manual.

ALL RIGHTS RESERVED, COPYRIGHT DENVER A/S



Electric and electronic equipment contains materials, components and substances that can be hazardous to your health and the environment, if the waste material (discarded electric and electronic equipment) is not handled correctly.

Electric and electronic equipment is marked with the crossed out trash can symbol, seen above. This symbol signifies that electric and electronic equipment should not be disposed of with other household waste but should be disposed of separately.

All cities have established collection points, where electric and electronic equipment can either be submitted free of charge at recycling stations and other collection sites or be collected from the households. Additional information is available at the technical department of your city.

Hereby, Denver A/S declares that the radio equipment type VPL-120 is in compliance with Directive 2014/53/EU. The full text of the RED declaration of conformity is available at the following internet address: denver.eu and then click the search ICON on topline of website. Write model number: VPL-120. Now enter product page, and RED directive is found under downloads/other downloads.

Information on standby/off mode power consumption and power management for products compliant with Commission Regulation (EU) 2023/826 can be found at the following internet address: denver.eu and then click the search ICON on topline of website. Write model number: VPL-120 and enter the page.

DENVER A/S

Omega 5A, Soeften

DK-8382 Hinnerup

Denmark

www.denver.eu

www.facebook.com/denver.eu

Contact

Main contact point: contact.hq@denver.eu

Nordics

Headquarter
Denver A/S
Omega 5A, Soeften
DK-8382 Hinnerup
Denmark

Phone: **+45 86 22 61 00**
(Push "1" for support)

E-Mail
For technical questions, please write to:
support.hq@denver.eu

For all other questions please write to:
contact.hq@denver.eu

Benelux

DENVER BENELUX B.V.
Barwoutswaarder 13C+D
3449 HE Woerden
The Netherlands

Phone: **0900-3437623**
E-Mail: **support.nl@denver.eu**

Spain/Portugal

DENVER SPAIN S.A
Ronda Augustes y Louis Lumiere, n° 23 – nave
16
Parque Tecnológico
46980 PATERNA
Valencia (Spain)

Spain
Phone: **+34 960 046 883**
Mail: **support.es@denver.eu**

Portugal:
Phone: **+35 1255 240 294**
E-Mail: **denver.service@satfiel.com**

Germany

Denver Germany GmbH Service
Service Center
Max-Emanuel-Str. 4
94036 Passau

Phone: **+49 851 379 369 40**

E-Mail
support.de@denver.eu

Monday - Thursday 09:00 - 16:30
Friday 09:00 - 14:00

Austria

Lurf Premium Service GmbH
Deutschstrasse 1
1230 Wien

Phone: **+43 1 904 3085**
E-Mail: **denver@lurfservice.at**

Poland

LetMeRepair Poland sp. z o.o.

ul. Częstochowska 140
62-800 Kalisz

Phone: **62 75 38 092**
E-Mail: **denver-service@letmerepair.pl**

Godziny pracy: 8 – 18 (poniedziałek – piątek)

If your country is not listed above,
please write an email to
contact.hq@denver.eu



Denver A/S
Omega 5A, Soeften
DK-8382 Hinnerup
Denmark

denver.eu
facebook.com/denver.eu

